

Sun Odyssey 440
"Palanga"

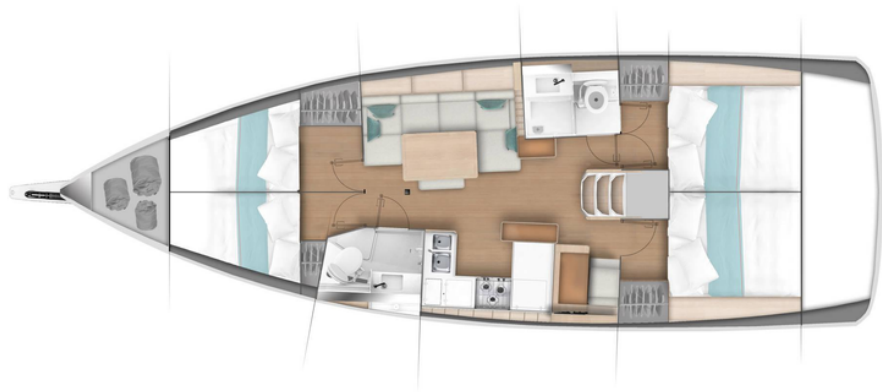


275823 ŠB

SUN ODYSSEY 440

Specifications

Length:	13,39 m
Beam:	4,29 m
Draft:	2,30 m
Engine:	57 HP/D
Cabins:	8/4 + 2 berths /cabins
Year of construction:	2022
Fuel tank:	200 l
Water tank:	530 l



Equipment

- Furling mast with dacron mainsail
- High transparency sprayhood with led lighting
- Bimini with canvas connecting to the sprayhood
- Retractable bow thruster
- Fans
- Saloon berth conversion kit
- Foot pump in the galley
- Interior and cockpit speakers
- RA70N fusion player (radio/USB/bluetooth)
- Shades and screens for hatches and ports
- USB plugs in cabins
- Cockpit sink with hot & cold water
- Navicolor battery monitoring
- Spinnaker hardware
- Rigging for asymmetrical spinnaker / Code 0
- Additional coachroof winch & handle
- Windex 15
- Cushions for fixed cockpit – carbon beige
- Helmsman seat cushions – carbon beige
- Eletronic pack 2022 Cruising: 1 raymarine i70s multifunction display, 1 depth-speed sensor, 1 masthead wind sensor, 1 raymarine RAY63 VHF, 1 raymarine p70s autopilot ACU400 core unit and gyrocompas, 1 GPS raymarine AXIOM+ 7 multifunction
- Touchscreen display with WIFI
- Electric toilet quiet flush / fresh water
- Inverter 12/230V 2000VA



