



“Palva”

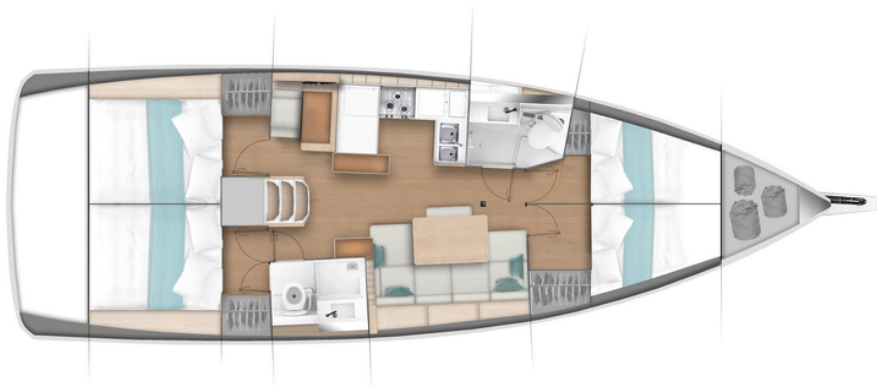
Sun Odyssey 440

Specifications

Length: 13,39 m
Beam: 4,29 m
Draft: 2,30 m

Engine: 57 HP/D
Cabins: 8/4 + 2 berths /cabins
Year of construction: 2023

Fuel tank: 200 l
Water tank: 530 l



Equipment

- Furling mast with Dacron mainsail
- Sprayhood with high transparency and LED lighting
- Bimini with canvas connected to the sprayhood
- Retractable bow thruster
- Fans
- Salon bed conversion kit
- Foot pump in the galley
- RA70N Fusion Player (Radio/USB/Bluetooth)
- Interior and cockpit speakers
- Blinds and screens for hatches and ports
- USB plugs in cabins
- Cockpit sink with hot and cold water
- Navicolor battery monitoring
- Spinnaker hardware
- Rigging for asymmetrical spinnaker / Code 0
- Additional roof winch & handle
- Windex 15
- Cushion for fixed cockpit – carbon beige
- Helmsman seat cushion – carbon beige
- Electronics package 2022 Cruising: 1 Raymarine i70s multifunction display, 1 Depth speed sensor, 1 Masthead wind sensor, 1 Raymarine RAY63 VHF, 1 Raymarine p70s autopilot ACU400 core unit and gyrocompas, 1 GPS Raymarine AXIOM+ 7 multifunction touchscreen display with WIFI
- Inverter 12/230V 2000VA



