

EIGHTY 3

MOTOR YACHT

Technical specifications

P This document is non-contractual and provided for informational purposes only.
Technical specifications are subject to modification.



Contents

Technical characteristics.....	2
Construction.....	3
Mooring/Anchoring	3
Propulsion and steering gear.....	3
Fuel system.....	3
Fresh water system.....	4
Grey water and black water systems	4
Bilge pumping system.....	5
Electrical system	5
Sound, HiFi & Video system	7
Air Conditioning	7
Lighting.....	7
Ventilation and extraction system.....	8
Deck fittings.....	8
Equipment, finishes and interior design.....	12
Saloon – Hull Galley version	14
4 cabins – Forward galley	16

Technical characteristics

Length overall	24,4 m / 80'1"
Hull length	23,91 m / 78'4"
Length on waterline	23,85 m / 78'3"
Beam overall	11,00 m / 36'1"
Draft	1,27 m / 4'2"
Light displacement (EC)	68.5 T / 151 017 lbs
Fresh water capacity	2 x 800 l / 2 x 211 US gal
Grey water capacity	2 x 300 l / 2 x 79 US gal
Fuel capacity	8 500 L / 2 246 US gal
Engines	2x John Deere N13-580 HP
Naval architect	VPLP Design
Exterior design	Patrick Le Quément
Interior design	Nauta Design
Design category	A : 14 - B : 18 - C : 24 - D : 40

Construction

- Vinylester on hard layer
- Bio-attributed and anti-osmotic resins on structural parts, hull, deck, roof.
Infusion process on balsa core
- Hull bottoms and keels in solid infused laminate

Mooring/Anchoring

- Anchor chain path incorporated into forward platform
- 1 QUICK 3500W 24V electric windlass with vertical gypsy (Ø16 mm / 125 m chain) on deck and remote control + chain counter at helm station
- Chain locker located at port of the windlass
- 2 electric aft capstans
- 13 mooring cleats
- 4 fairleads

Propulsion and steering gear

- 2 John Deere N13-580 HP diesel engines, shaft line assembly
- Fixe propellers : Bruntons – 5 blades Ø816
- Rope cutters on the propeller shafts
- Seawater filter
- Bow thruster with control at helm station
- Electric engine control at helm station on flybridge
- 2 spade rudders: foam sandwich and stainless steel stock
- Epoxy rudder tubes
- Self-aligning upper and lower rudder bearings
- Hydraulic transmission (1 actuator per rudder)
- Hydraulic pump in engine compartment
- Engine bilge ventilation: natural aspiration and forced extraction in aft beam
- Engine compartment soundproofed

Fuel system

- 8 500 L / 2 246 US Gal aluminum tanks. Gauge on general distribution panel
- Primary filter and water separator with filter

- Fuel shutoff valve
- Fuel shutoff remote controls
- Transfer pump between tanks

Fresh water system

- Freshwater tanks: 2 x 800 liters / 2 x 211 US Gal with gauge at general distribution panel
- Freshwater system with 2 x 24V 50L/min pumps
- Hot water system with 2 x 100 liters / 2 x 26 US Gal water heaters with 230V heating element and engine heat exchanger
- UVOJI water purifier solution in galley down and bar in salon
- Freshwater fillers on deck
- Freshwater intake on starboard transom
- Freshwater/seawater deck wash pump outlet at forward cockpit
- Freshwater wash pump at aft cockpit and outlet at flybridge

Grey water and black water systems

GREY WATER

- Grey water tanks : 2 x 300 liters / 2 x 79 US Gal with gauge at general distribution panel
- Shower/washbasin and galley sink drained to grey water tank and automatic pump
- Manual and/or automatic tanks draining from the general panel
- Rainwater drains directly into the sea

BLACK WATER

- TECMA Silence Plus electric freshwater toilet in each head (24V)
- Black water tanks :
 - Port:
 - 1 holding tank per toilet (73 liters)
 - Starboard:
 - 1 common holding tank for owner and guest heads (320 liters)
- Tank levels are monitored from the main panel

- Solenoid electric valve for the black water draining in the cabins' heads, with manual backup

Bilge pumping system

- Self-bailing cockpit in accordance with EC standards
- 2 manual bilge pumps operated from the aft cockpit
- 1 electric bilge pump with automatic float switch and manual override + bilge sump level alarm in each hull
- 1 electric bilge pump with automatic float switch and manual override + bilge sump level alarm in each engine compartment
- Alarms and controls:
 - Sump level alarm at the chart table and on the flybridge
 - 24V AC electric pump control panel incorporated next to the main panel
 - Bilge pump switch at helm station

Electrical system

ELECTRICAL PANELS:

- Main AC & DC panels in the port forward companionway
- Secondary AC & DC electrical panels installed in all areas of the vessel

230V AC, 50HZ SOURCES FOR:

- Shore power supply : 63 Ah
- Shore power Air conditioning supply : 63 Ah
- Alternators: 24V 2x 150 Ah
- Inverters: VICTRON 2 kVA 24/230V
- Generator: MASE 17,5 kVA located in starboard engine compartment

24V DC SOURCES WITH NEGATIVE GROUND FOR:

- Batteries
 - Service batteries : Lithium 24V 1200 Ah
 - Engine starting batteries: 12V 75 Ah
 - Generator starting batteries: 12V 75 Ah
- Battery charger : VICTRON 230V 100 Ah

230V AC DISTRIBUTION:

- BUS "POWER"
 - Service battery chargers
 - Engine starting battery charger
 - Bow thruster battery charger
 - Water maker (option)
 - Water heater
- BUS "AIR CONDITIONING"
 - Chillers
 - Fan Coil Units
- BUS "COMFORT"
 - Sockets
 - Sockets in technical compartments
 - HiFi and video: salon, cockpits, flybridge & owner cabin per standard and options
 - Ice-maker in the galley/bar
 - Refrigerator in the galley/bar (optional)
 - Wine cooler in the galley/bar (optional)
 - Electrical appliances in the galley down
 - Oven
 - Hob
 - Extractor hood
 - Microwave oven (optional)
 - Coffeemaker (optional)
 - Electrical appliances in crew cabin:
 - Dishwasher
 - Washer-dryer
 - Exterior electrical appliances:
 - Ice-maker in flybridge
 - Refrigerator in flybridge and aft cockpit
 - Grill in flybridge

Sound, HiFi & Video system

- Aft cockpit : 4 loudspeakers
- Forward cockpit : 2 loudspeakers
- Flybridge : 2 loudspeakers
- Salon: 55" retractable ceiling TV with 4 loudspeakers
- Owner cabin: Hifi sound with 2 loudspeakers & 43" TV with electric lift

Air Conditioning

- WEBASTO Low Consumption air conditioning system
- Reversed A/C system, Heating and Cooling mode
- 156 000 BTU (output capacity)
- BlueCool series - VX72 with 2 compressors :
 - Eco cooling liquid: R32 (GWP 675)
 - Increased capacity modulation up to 9% of rated capacity
 - Energy efficiency ratio (EER / COP) up to 5.6
 - Titanium condenser
 - Quiet mode (Option "UPGRADE LITHIUM BATTERIES" compulsory)

Lighting

Engine and generator compartment:

- 2 x 24V DC neon lamps in the engine and generator compartment

Owner, VIP and guest cabins:

- LED spotlights and LED striplights in the ceiling
- LED lamps at the bedhead
- LED courtesy striplights under the shelves and the furniture

Saloon:

- LED spotlights and LED striplights in the ceiling
- LED courtesy striplights under the shelves and bar cabinet

Galley:

- LED spotlights and LED striplights under the furniture

Heads:

- LED spotlights and LED striplights under the furniture

Ventilation and extraction system

INTERNAL VENTILATION

- Each cabin has at least two sources of natural ventilation
- Each head has at least one source of natural ventilation
- Heads equipped with an extractor fan for the toilets with a dedicated control

ENGINE COMPARTMENT VENTILATION

- 2 x 24V DC electric fans
- Engine compartment ventilation system connected to each engine

Deck fittings

FLYBRIDGE

- Access from cockpit via staircase with wooden steps on stainless steel frame
- Electric closing of the access to the flybridge
- 1 helm station with:
 - Helmsman's seat
 - Seat and backrest cushions
 - Stainless steel covered wheel
 - Power steering (electric + hydraulic system)
 - Navigation instruments with 2x AXIOM PRO 16" Raymarine multifunction display, autopilot, and VHF AIS
 - Compass
 - Engine panel and bow thruster control
 - Windlass control and chain counter
 - Lighting control panel
 - Search light with dedicated control panel
- Radar and fog horn
- Cabinet on port with:

- Corian® countertop with integrated sink
- Storage behind doors
- 49 liters/13 US Gal refrigerator
- Electric plancha/grill
- Ice-maker
- Loose furniture with:
 - 10 PAX dining table with chairs
 - U-shape sofa with fainting couch
 - Low table
- Natural wood with black caulking on flybridge deck
- Composite hard top bimini with:
 - Sky windows
 - Integrated lights
 - Privacy curtains
 - Winter enclosures with windows

DECK

- Aft cockpit deck, transoms, side decks and forward cockpit in natural wood
- Deck hatches:
 - Custom Lewmar 1000 x 660 mm for galley
 - Lewmar T60 for cabins
 - Lewmar T77 for forepeak
- Lighting:
 - LED spotlights and LED striplights in the aft cockpit
 - LED spotlights in the ceiling
 - LED striplights under transoms and deck steps
 - LED courtesy lights along the bulwarks and forward platform
- Safety:
 - 880 mm rail stanchion
 - 300 mm composite bulwark
 - 1 row of lifelines
 - Removable aft lifelines on transoms

- Pulpits with wooden seat
- Opening lifelines on port and starboard with boarding ladder

AFT PLATFORM AND TRANSOMS

- TENERLIFT hydraulic aft platform with folding starboard side & remotes:
 - Platform dimensions (L x W) : 5,30 x 1,98 m
 - Tender maximum weight : 850 kg
 - Tender maximum length : 4,6 m
- Stainless steel foldable and removable swimming ladder with bail
- Hot and cold shower on starboard
- Shore power input sockets on starboard transoms (2x 63 Ah)
- Freshwater inlet and outlet on starboard transoms
- Upholstery on capstans seats (with covers)

AFT COCKPIT

- Cockpit floor leveled with saloon's
- S-shaped bench seat
- Table
- 4 outdoor chairs
- Bench seat on portside
- Port furniture with 51 liters/13 US Gal refrigerator and sink
- 2 sunbathing areas, port and starboard
- 4 large storage lockers under cockpit floor, including 2 for liferafts (2 x 800L)
- 4 large storage lockers on aft deck (4x 600L)
- 1 storage locker under the access steps to flybridge (800L)
- Upholstery with covers
- Aft cockpit enclosures with windows & privacy curtains

FORWARD COCKPIT

- Forward cockpit floor leveled with saloon's
- Access by way of a glass door (PMMA)

- 2 seating areas with 1 storage locker under port seating (700L) and 1 large storage locker on starboard with access to hydraulic system (3500L)
- 1 large locker in cockpit floor (500L)
- Upholstery with covers

FOREDECK

- 4 storage lockers including one dedicated to anchoring
- Wooden forward platform

Equipment, finishes and interior design

- Furniture and bulkheads in Alpi® sand oak brushed finition
- Floor in Alpi® Ready Xilo flamed white
- Bar countertop in Laminam
- Head and shower floorings in Corian®
- Guest heads countertop in Corian®
- Owner head countertop in Laminam
- Ceiling: Vinyl
- Roof frame: Vinyl
- Saloon gunwale in leatherette
- Saloon furniture tops in glass
- Chart table and desk in cabins in leatherette
- Bedside table insert in leatherette
- Sofa and stool in fabric
- Bedhead in leather
- Bed frame in fabric
- Locker handles in black matte finishing
- Doors with fabric insert
- Owner's cabin sliding door insert in mirror

- Crew area:
 - Furniture and bulkhead in white laminate
 - Furniture details and kickers in grey laminate
 - Laminated floor
 - Galley countertop in Corian®
 - Bed frame in fabric
 - Upholstery in fabric

MATTRESSES AND UPHOLSTERY

- Mattresses made of high resistance honeycomb foam. Air space 3D technology, (35kg/m³ - 77 Lbs)

- Electric blackout roller curtains in cabins
- Electric blinds in saloon
- Manual curtain on the aft bay window of the salon
- Mosquito net and shutter for deck hatches

Saloon - Hull Galley version



- Access from the aft cockpit through a wide glazed sliding door (overall dimensions 3.8 x 1.95 m/12'6" x 6'5" - opening dimensions 2.3 x 1.95 m/7'7" x 6'5")
- Access from the forward cockpit by way of a glass door (PMMA)
- Electric blinds

TO PORT

On aft:

- Sofa
- Chairs
- 1 dining table
- Storage furniture

On forward:

- 1 bar / day-galley with:
 - Storages and lockers unit
 - Stainless steel galley accessories rack
 - 1 sink
 - Countertop in laminam
 - Bar countertop with high chairs
- 1 manual retractable window

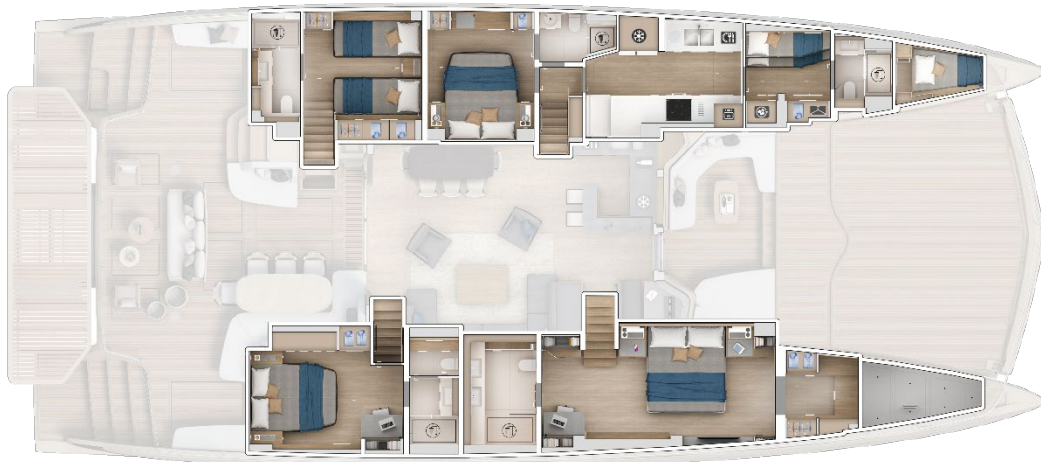
ON STARBOARD

- U-shaped sofa
- 1 low table
- 1 storage unit
- 55" retractable ceiling TV with 4 loudspeakers

CHART TABLE

- Chart table furniture with:
 - Electronics: with 2x AXIOM2 XL 22" Raymarine multifunction display with keyboard, autopilot and VHF's.
 - Dedicated seat
 - Desk with storage

4 cabins - Forward galley



PORT HULL

Aft cabin:

- 2 single beds with side access (2.05 x 0.90 m/6'9" x 2'11", sliding and convertible into one double bed)
- 1 central bedside table with central compartment, power and USB plugs
- 2 bedhead wall lamps
- 1 drawer under each bed
- 1 hanging locker - outboard side
- 1 storage locker- inboard side
- 1 T60 opening deck hatch
- 1 PMMA fixed hull window with 1 integrated T3 opening hull porthole
- Electric blackout roller blinds
- AC (and HI-FI when selected) control

Aft head:

- Corian® countertop with integrated washbasin
- Hot and cold mixer tap
- High-level locker with 1 mirrored door and niches
- Low-level locker with doors

- Separated shower, peripheral draining and toughened glass swing doors
- Head shower and additional hand shower
- Electric freshwater toilet (Tecma)

Mid-ship cabin:

- 1 island double bed (2.05 x 1.67 m/6'9" x 5'6")
- 2 storage drawers under the bed
- 2 bedside tables with power and USB plugs. Central compartment and 2 drawers below
- 1 desk
- 1 stool
- 2 bedhead wall lamps
- 1 hanging locker and 1 storage unit on each side of the desk - outboard side
- 1 T60 opening deck hatch
- 1 PMMA fixed hull window with 1 integrated T3 opening hull porthole
- Electric blackout roller blinds
- AC (and HI-FI when selected) control

Mid-ship head:

- Access from companionway as day head and from cabin
- Corian® countertop with integrated composite washbasin
- Hot and cold mixer tap
- High-level locker with 1 mirrored door and 3 cubbyholes
- Low-level locker with 2 doors
- Separated shower, peripheral draining and toughened glass swing doors
- Head shower and additional hand shower
- Electric freshwater toilet (Tecma)
- 1 T60 opening deck hatch

Forward galley:

- Access from the port forward companionway

- Large opening deck hatch for direct access from the deck through a retractable electrical staircase
- 1 PMMA fixed hull window with 1 integrated T3 opening hull port
- AC (and HI-FI when selected) control
- Outboard :
 - Combined refrigerator/freezer with integrated icemaker (Samsung – Volume 409L/225L // 108 US gal/60 US gal)
 - 1 dishwasher (Miele)
 - Corian® countertop with stainless steel double sink and hot and cold mixer tap
 - 2 doors locker under sink
 - 1 waste receptacle with access from above and door at front
 - 1 door low-level unit with shelves
 - 1 low-level unit with 4 drawers
 - High-level lockers with flaps
 - 1 PMMA fixed hull window with 1 integrated T3 opening hull port
- Inboard:
 - Corian® countertop
 - Corian® dining table with bench seat and storage
 - 1 x 4-burner induction hob 230V (Miele) and pan clamps
 - 1 electric oven (Miele)
 - 1 extractor hood (Electrolux)
 - High and low-level lockers with doors, shelves and drawers

Crew cabin

- 2 bunk beds (2.05 x 0.90 m/6'9" x 2'11")
- 1 drawer under the below bed
- 1 hanging locker and 1 storage unit – inboard side
- High- and low-level lockers
- 1 washer/dryer (Miele)
- 1 T60 opening deck hatch
- AC (and HI-FI when selected) control

Crew head

- Corian® countertop with integrated washbasin
- Hot and cold mixer tap
- High-level locker with 1 mirrored door and 3 niches
- Low-level locker with 2 doors
- Separated shower, peripheral draining
- Head shower and additional hand shower
- Electric freshwater toilet (Tecma)
- Access door to forepeak

Forepeak:

- Access through deck hatch and from the crew cabin
- 1 berth
- Furnitures
- Reverse cycle chilled water air conditioning with control

STARBOARD HULL**Aft cabin:**

- 1 island double bed (2.05 x 1.67 m/6'9" x 5'6")
- 2 storage drawers under the bed
- 2 bedside tables with power and USB plugs. Central compartment and 2 drawers on each side
- Inboard :
 - 1 unit with hanging locker in the upper section and shelf in the lower section
 - 2 low-level units with 2 doors and 1 shelf each
- Outboard :
 - 1 desk
 - 1 stool
 - Low-level unit with 2 doors and shelves
- 1 T60 opening deck hatch

- 1 PMMA fixed hull window with 1 integrated T3 opening hull port
- Electric blackout roller blinds
- AC (and HI-FI when selected) control

Aft head:

- Laminam countertop with integrated washbasin
- Hot and cold water mixer tap
- High-level locker with 1 mirrored door and 3 cubbyholes
- Low level storage unit with 2 drawers
- Separated shower, peripheral draining and toughened glass swing doors
- Head shower and additional hand shower
- 1 PMMA fixed hull window with 1 integrated T3 opening hull port
- Electric blackout roller blinds
- Separated toilet :
 - 1 large storage unit with 2 mirrored doors with 4 shelves in the upper section and 2 drawers and 2 doors with shelves in the lower section
 - Electric freshwater toilet (Tecma)

Owner's suite:

- Access from the forward salon, through a wooden sliding door
- Inboard :
 - 1 island double bed (2.05 x 1.80 m/6'9" x 5'11")
 - 1 bedside table with power and USB plugs. Central compartment and 2 drawers below
 - 1 bedside table with central compartment and 4 drawers and a bookcase in the upper section
 - 2 storage drawers under the bed
 - 1 unit with 2 drawers in the lower section and bookcases in the upper section
- Outboard :
 - 1 desk "loose furniture" design
 - 1 stool
 - 1 unit with storage in the lower section and bookcase in the upper section

- 2 T60 opening deck hatches
- 2 PMMA fixed hull windows with 1 integrated T3 opening hull port
- Electric blackout roller blinds
- HIFI sound & video system
- AC (and HI-FI when selected) control

- Dressing :
 - Hanging lockers
 - 6 sliding shelves with leather insert and Plexiglas fiddle
 - 3 drawers inboard side
 - 2 drawers under hanging lockers
 - Trouser rack
 - 1 T60 opening deck hatch

Owner's head:

- Laminam countertop with integrated double washbasin
- Wall panels and flooring in Laminam
- High-level locker and low-level locker
- Electric freshwater toilet (Tecma)
- Separated shower, peripheral draining and toughened glass door
- Head shower and additional hand shower
- 1 T60 opening deck hatch
- 1 PMMA fixed hull window with 1 integrated T3 opening hull port

Forepeak:

- Access through deck hatch
- Stainless steel ladder
- Floor
- White paint

EIGHTY
3



LAGOON

162, quai de Brazza
CS 81217
33072 Bordeaux Cedex - France
Tel.: +33 5 57 80 92 80
Email: info@cata-lagoon.com
www.cata-lagoon.com